

BUGWOOD

Image Database System

images.bugwood.org

Providing an easily accessible
archive of high quality images for use in
educational applications

4 major BugwoodImage website interfaces are:

www.forestryimages.org

www.ipmimages.org

www.insectimages.org

www.invasive.org

- Started in 1994, website launched in 2001
- People around the world can use the images for non-profit educational use, with the proper citation
- Photographers retain rights to their images
- Each contributor decides how they wish to handle commercial requests for their images.
- Wide audience including growers, managers, researchers, diagnosticians, consultants, regulatory officials, educators, journalists and the general public
- Bugwood websites received 183 million hits in 2009 averaging 12 million each month (400,000 per day)

Over 117,380 images
1,624 photographers
13,520 subjects



The focus of BugwoodImages is on species of economic concern. Images cover invasive species, forestry, agriculture, integrated pest management, plants, insects, diseases, fungi, wildlife, fire, and other natural resource issues. Images are reviewed for content and quality.



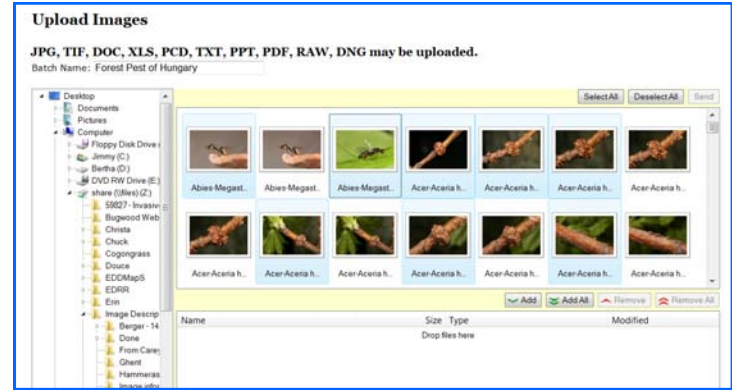
A product of the
Center for Invasive Species
and Ecosystem Health at
the University of Georgia
Tifton, GA, USA

March 2010

Photographer Tools

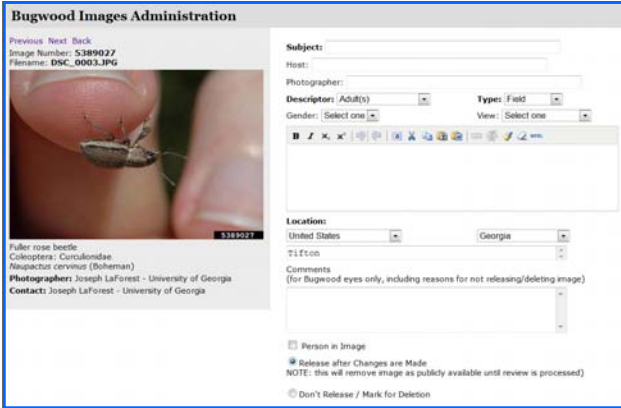
Image Upload

A web-based image uploader is available for photographers to easily send images and information. The material is reviewed by the Center Staff and approved for addition. Details about the upload process, required information and image standards are found at <http://images.bugwood.org>.



Reviewing Image Data

Online review forms allow users to directly edit information for their images to add relevant details or let the Center Staff know about other changes that should be made.



Editing Profiles and Information Pages

It is important for photographers, organizations, professional societies and other contributors to receive recognition for their image contributions to BugwoodImages. To do this, we have create profile pages for these different entities. Each Profile page contains

- A logo and/or picture to identify the group or person
- Contributor information
- Links to external sites

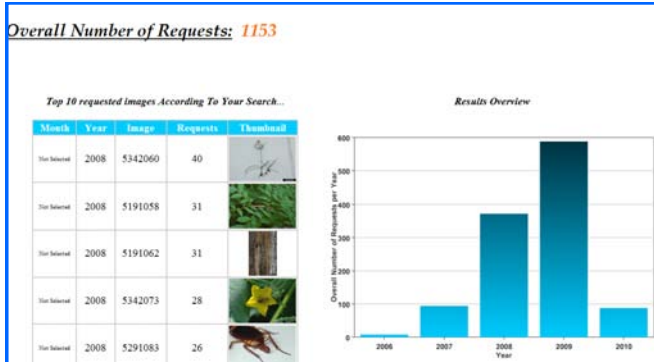
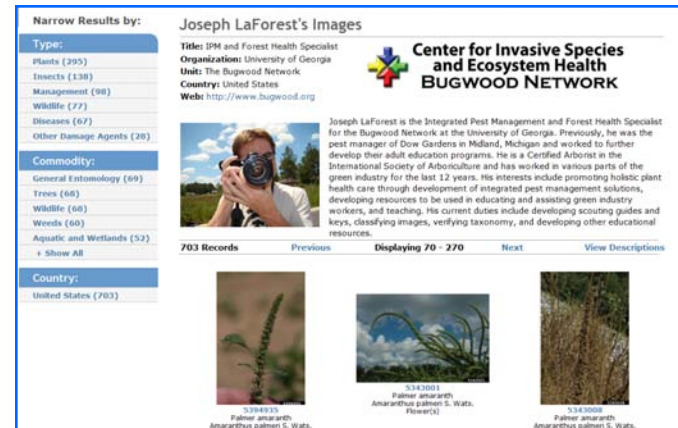


Image Use Statistics

Statistics on number of hits each image has received as well as the image usage requests are compiled for each photographer.

For more information on the Bugwood Image Database System, visit images.bugwood.org or contact **Joe Laforest 229-386-3298** or laforest@uga.edu